

Advanced technology for aesthetical parts.

PRODUCT HIGHLIGHTS

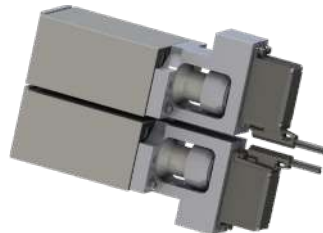
- ✔ The solution : a flexible and cost effective approach to demanding cosmetic applications
- ✔ Apply technology only on needed nozzles
- ✔ Moving back to standard sequential is possible and easy
- ✔ Symbioz S controller drives Flow Driver technology
- ✔ Upgrade existing or future hydraulic sequential hot runners system only if necessary (after first trials for instance)
- ✔ Adjust pin speed and pin position of the opening and closing

COMPONENT

HYDRAULICS



MULTISPEED MODULE



REMOTE SERVO

MECHANICS



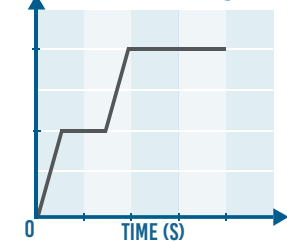
LINEAR SENSOR



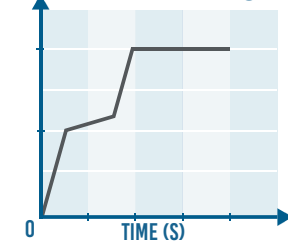
PROGRESSIVE GATE

EXAMPLES OF SERIES

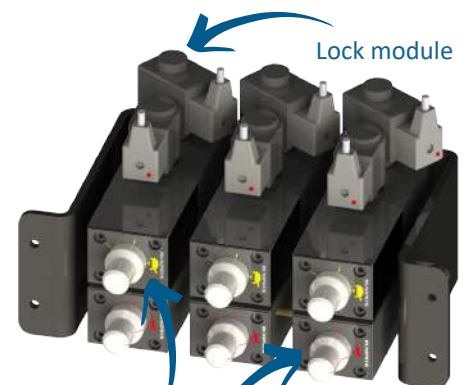
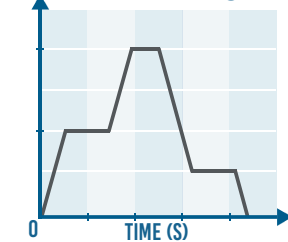
▶ S1L



▶ S2



▶ S1X



Slow speed module

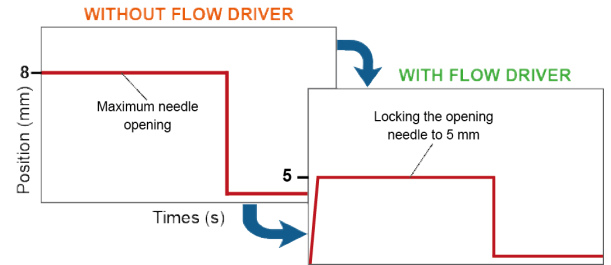
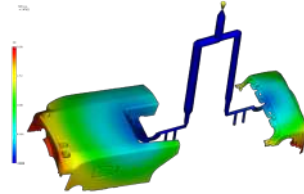
Fast speed module

APPLICATIONS

OPTIMIZE FLOW BALANCE:

Fine tune the flow rate to smaller cavities in a family tool and balance the filling of the cavities by locking the valve pin partially open until the packing phase.

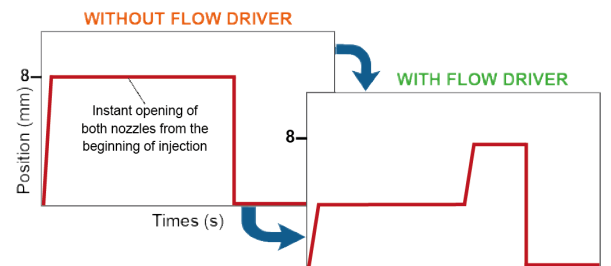
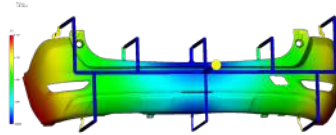
Case study : S1L



RELOCATED WELD LINES:

Slow the flow fronts of intersecting gates to relocate the weld line by locking the valve pin partially open.

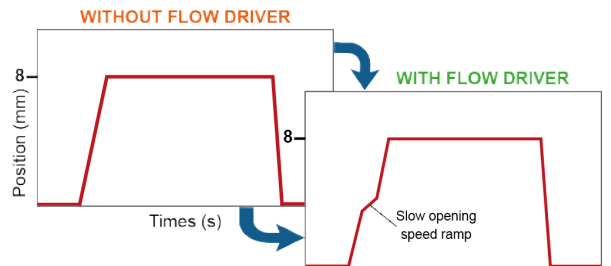
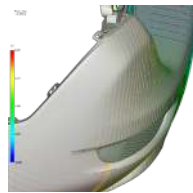
Case study : S1L



ELIMINATE ACCELERATION LINES:

Eliminate the sudden acceleration of the flow front in sequential systems by briefly slowing the opening of the valve pin.

Case study : S2



ELIMINATE PRESSURE LINES:

Reduce the gate to gate material interaction to eliminate pressure lines by locking the valve pin partially closed during the packing phase.

Case study : S1X

