

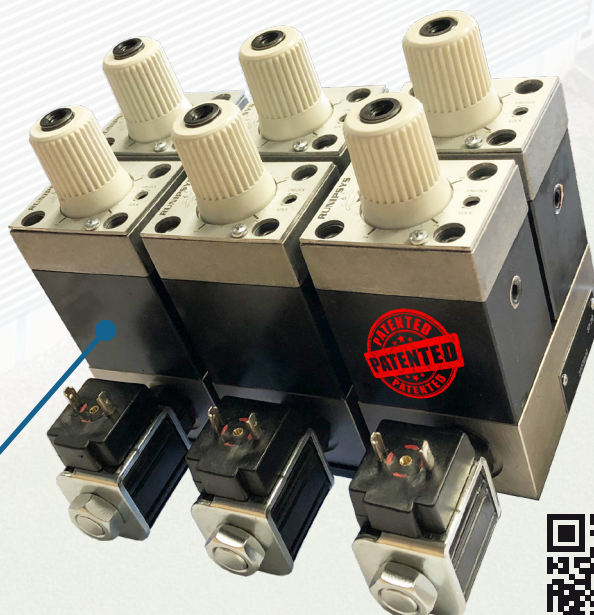
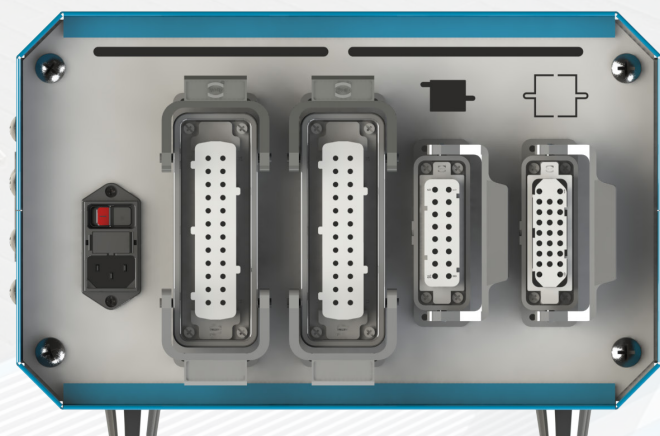
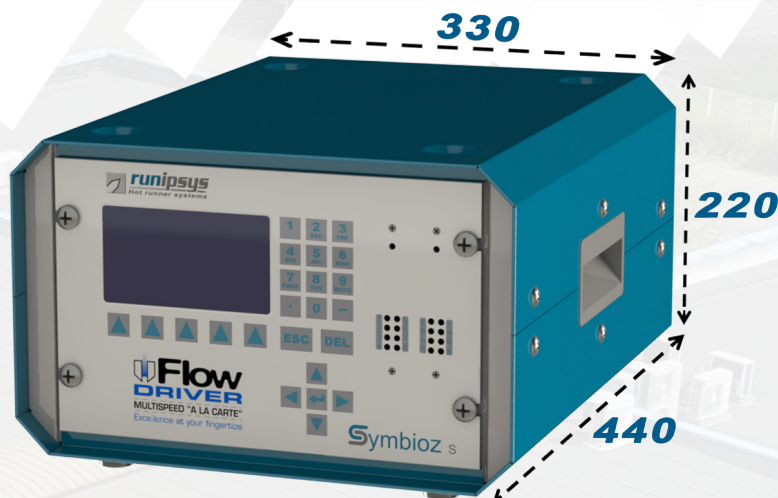
# SYMBIOZ S

Flow Driver sequential controller : Symbioz S.

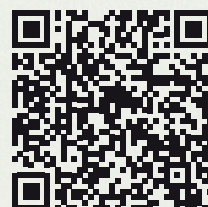


## Product Highlights

- Symbioz S multispeed valve pin controller for Runipsys patented Flow Driver technology
- Designed to be used in parallel with existing valve gate controllers and only control Flow Driver functions
- Can be used as a stand alone valve gate controller
- Controls the latest Flow Driver functions:
  - Lock/unlock during opening & closing
  - Fast/slow
- Up to 16 valve gate control signals available
- Intuitive Flow Driver specific programming through pc software: win is'tech.(see reverse)
- Pc is not required for operation and can be removed after process parameters are set
- Internal memory can store up to 48 different mold process settings
- Process data monitoring and shot data storage is possible through permanent PC connection
- No injection molding machine connection needed
- Remote access and control through pc connection (from outside the plant, including by runipsys)



Symbioz S controller drives the latest Flow Driver technology



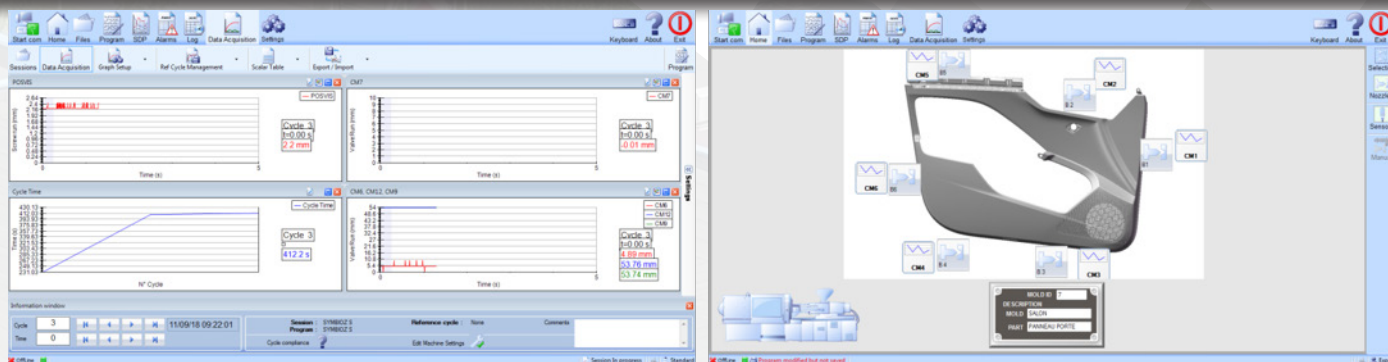


# SYMBIOZ S

Flow Driver sequential controller : Symbioz S.



## Intuitive WIN IS'TECH for Flow Driver PC programming software



Channel	Name	Parameters	Wait	Opening 1	Closing 1	Labels	Opening 2	Closing 2
1	EV1	Type: S2 Capteur: CM1				Top maintain - 5s		
2	EV2	Type: S1L Capteur: CM2				Top maintain - 5s		
3	EV3	Type: S1E Capteur: CM3				CM3 - 5mm		
4	EV4	Standard				Top maintain - 5s		
5	EV5	Standard				Top maintain - 5s		

## Symbioz S controller drives the latest Flow Driver technology

