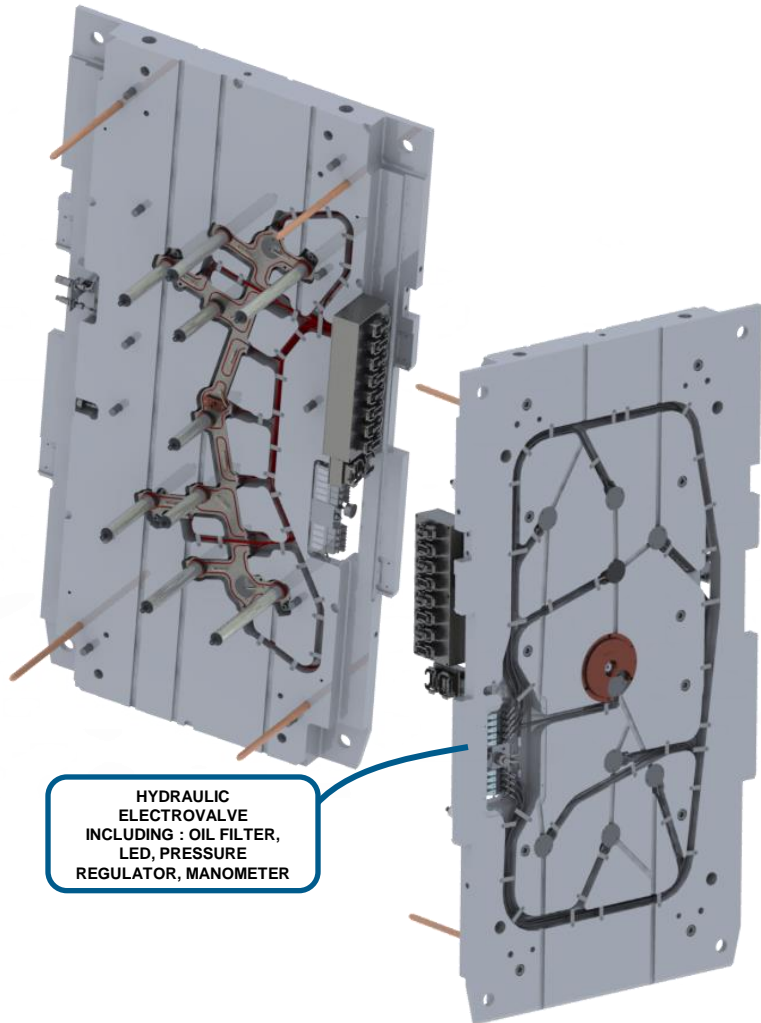


HOT HALF SOLUTION FOR SEQUENTIAL HOT RUNNER SYSTEMS

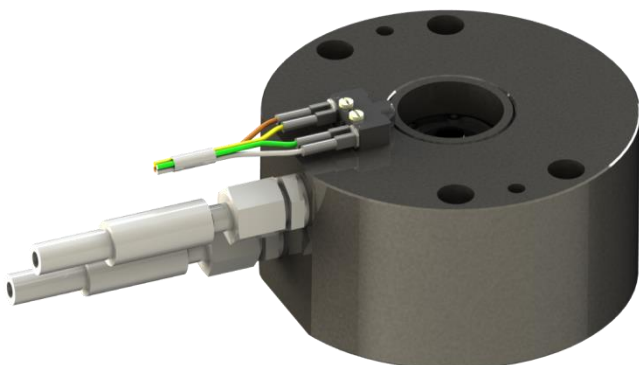
MODULFLOW IS A SELF CONTAINED THIRD PART OF THE MOLD WHICH INCLUDES THE MECHANICAL, THERMAL AND HYDRAULIC/PNEUMATIC COMPONENTS

PRODUCT HIGHLIGHTS

- ✔ CYLINDERS ARE IN-LINE WITH NOZZLES
- ✔ NO COOLING REQUIRED ON HOT HALF PLATES
- ✔ MAXIMUM MOLD SUPPORT (NO CABLE TRUNK)
- ✔ COMPACT THICKNESS : 105 TO 150 MM (4.134" TO 5.905")
- ✔ EASY ASSEMBLY AND MAINTENANCE INCLUDING GUIDE PINS
- ✔ NOZZLE TIP, VALVE PIN AND BUSHING INDEXED (WILL ALWAYS BE IN ACCURATE POSITION)
- ✔ PROTECTED AND SEPARATED ELECTRIC AND HYDRAULIC COMPONENTS
- ✔ SUPERIOR RHEOLOGY INSIDE THE MANIFOLD : FREE MANIFOLD SHAPE
- ✔ HIGH PERFORMANCE TIP TECHNOLOGY FOR AESTHETICAL OR GLASS FIBER REINFORCED PARTS
- ✔ AVAILABLE IN HYDRAULIC 100 BAR, 50 BAR AND PNEUMATIC



POSITION SENSOR



NEAR CENTER INJECTION



DESIGNED TO INJECT MEDIUM TO LARGE SIZE PARTS MODULFLOW IS AVAILABLE IN 2 SIZES : CLASS 1 AND CLASS 2

CLASS 1

NOZZLE A

- Ø 22 AND 24 MM
- NEEDLE Ø 8 MM
- GATE Ø 8 MM

NOZZLE B

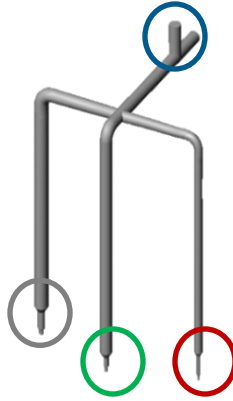
- Ø 16, 18, 21 MM
- NEEDLE Ø 6 MM
- GATE Ø 4, 5, 6 MM

MANIFOLD

- Ø 8, 10, 12, 14, 16, 18, 20, 22 MM

NOZZLE C

- Ø 10, 12, 14 MM
- NEEDLE Ø 5,5 MM
- GATE Ø 2, 3, 4 MM



CLASS 2

MANIFOLD

- Ø 8,10, 12, 14 MM

NOZZLE C

- Ø 8, 10, 12, 14 MM
 - NEEDLE Ø 5,5 MM
 - GATE Ø 2, 3, 4 MM
- For PP application And / Or system with color change requirement.



MODULFLOW IS DESIGNED TO PROVIDE HIGH PERFORMANCE INJECTION IN A COMPACT ENVIRONMENT

CLASS 1

MINIMUM PITCH DISTANCE (MM)
HYDRAULIC 100 BAR = 100
HYDRAULIC 50 BAR = 110
PNEUMATIC 7 BAR = 120

THICKNESS (MM)
140 HYDRAULIC
(150 WITH FLOW DRIVER)
140 PNEUMATIC

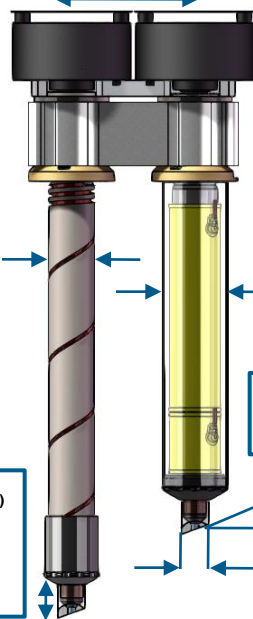
MONOZONE HEATER
CUTOUT Ø (MM)
NOZZLE A = 51
NOZZLE B = 47
NOZZLE C = 36

MULTIZONE HEATER
CUTOUT Ø (MM)
NOZZLE A = 69
NOZZLE B = 57
NOZZLE C = 47

MAXIMUM ANGLE (°)
EASYTIP = 20
TECHTIP = 10

TIP CUTOUT HEIGHT (MM)
NOZZLE A = 20
NOZZLE B EASYTIP = 20
NOZZLE B TECHTIP = 12
NOZZLE C EASYTIP = 14
NOZZLE C TECHTIP = 8

TIP Ø (MM)
NOZZLE A = 28
NOZZLE B = 22
NOZZLE C = 15



CLASS 2

MINIMUM PITCH DISTANCE (MM)
HYDRAULIC 100 BAR = 75
HYDRAULIC 50 BAR = 100
PNEUMATIC 7 BAR = 85

THICKNESS (MM)
105 HYDRAULIC 100 BAR
120 HYDRAULIC 50 BAR
123 PNEUMATIC

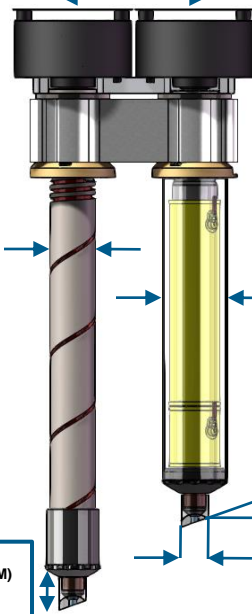
MONOZONE HEATER
CUTOUT Ø (MM)
NOZZLE C = 36

MULTIZONE HEATER
CUTOUT Ø (MM)
NOZZLE C = 47

MAXIMUM ANGLE (°)
EASYTIP = 20
TECHTIP = 10

TIP CUTOUT HEIGHT (MM)
EASYTIP = 14
TECHTIP = 8

TIP Ø (MM)
NOZZLE C = 15



MANY STANDARD SOLUTIONS HAVE BEEN DEVELOPED TO SUIT ALL INJECTION SITUATIONS

- LONG GLASS FIBER MATERIAL (LGF)
- 2K MOLDS
- FLOWCONTROL, FLOW DRIVER
- LATERAL INJECTION

- TECHNICAL MATERIALS
- FAST COLOR CHANGE
- UNFAVORABLE L/Z RATIO
- WOOD OR TEXTILE OVERMOLDING