

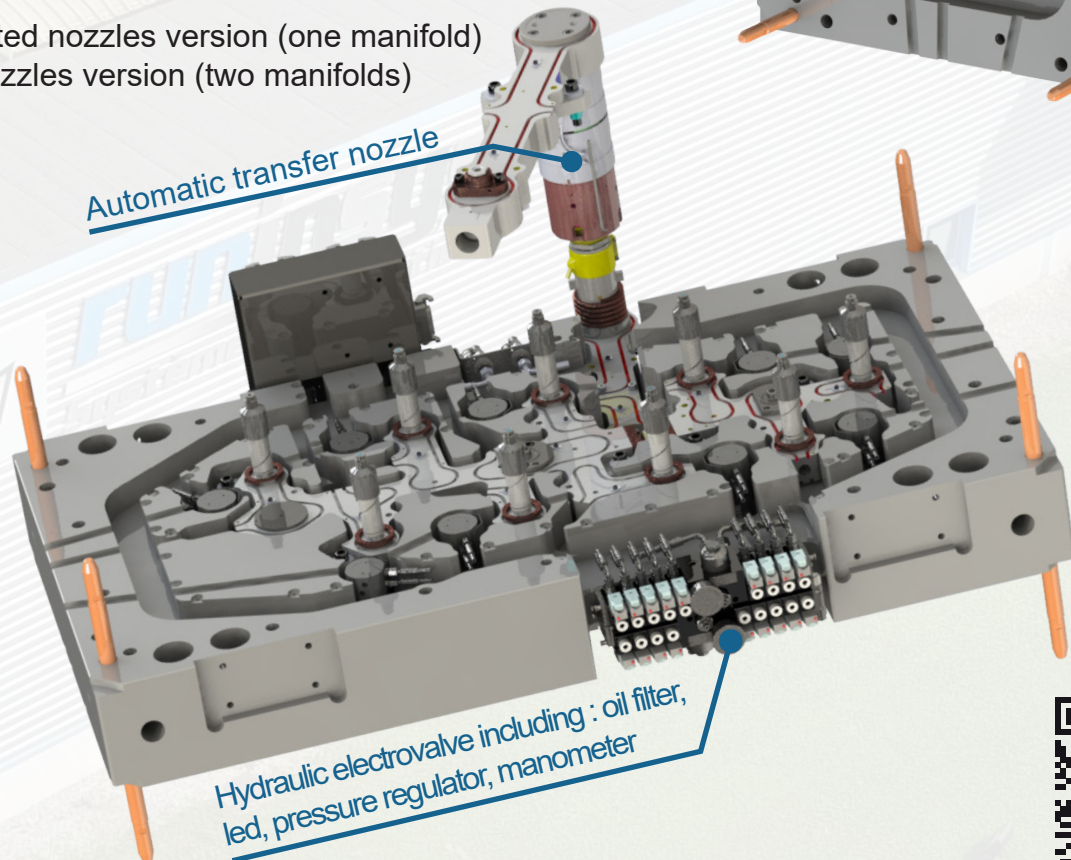
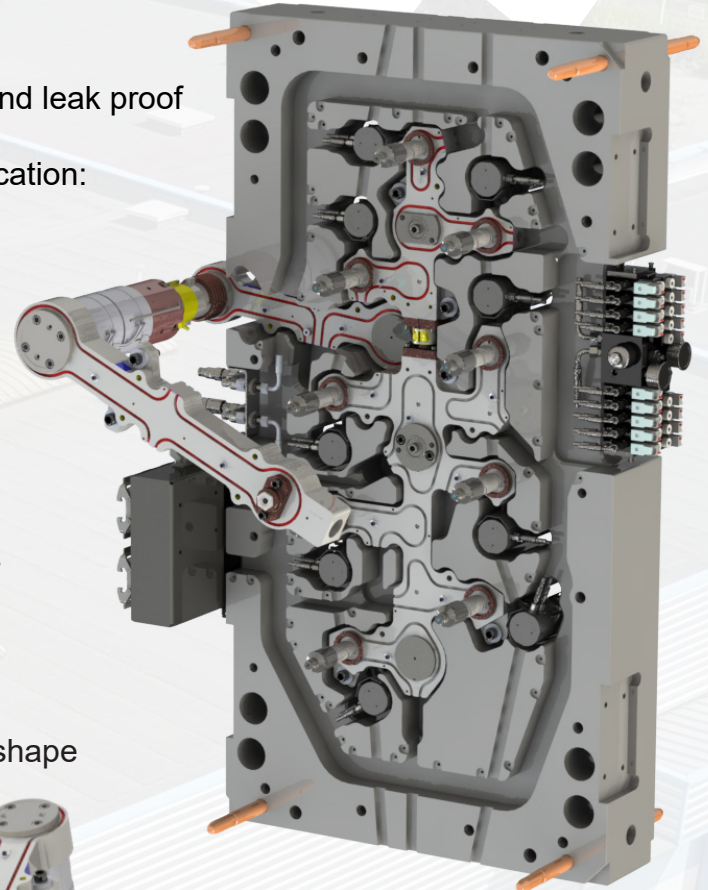
STEPFLOW

Stack mold solution for sequential hot runner systems
 Stepflow is a compact and coolant free self contained middle part of the mold which includes the mechanical, thermal, hydraulic components and an innovated automatic mechanical transfer nozzle



Product Highlights

- Automatic mechanical transfer nozzle without waste : only requires clamp force, very easy to use, reliable and leak proof
- Transfer nozzle position is designed to suit your application: in the center or at the bottom of the mold
- Cylinders are offset with nozzles : no cooling required
- Maximum mold support (no cable trunk)
- Very compact middle plate thickness : 132 to 210mm (5.196" to 8.267")
- Easy assembly and maintenance including guide pins
- Nozzle tip, valve pin and bushing indexed (will always be in accurate position)
- Superior rheology inside the manifold : free manifold shape
- Available in shifted nozzles version (one manifold) and opposite nozzles version (two manifolds)

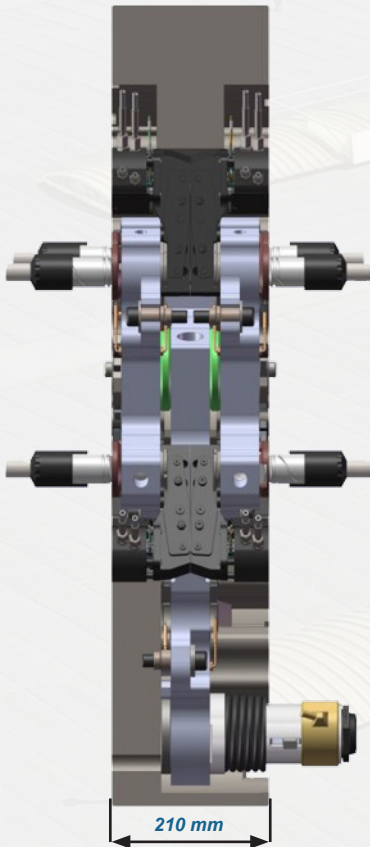


STEPFLOW

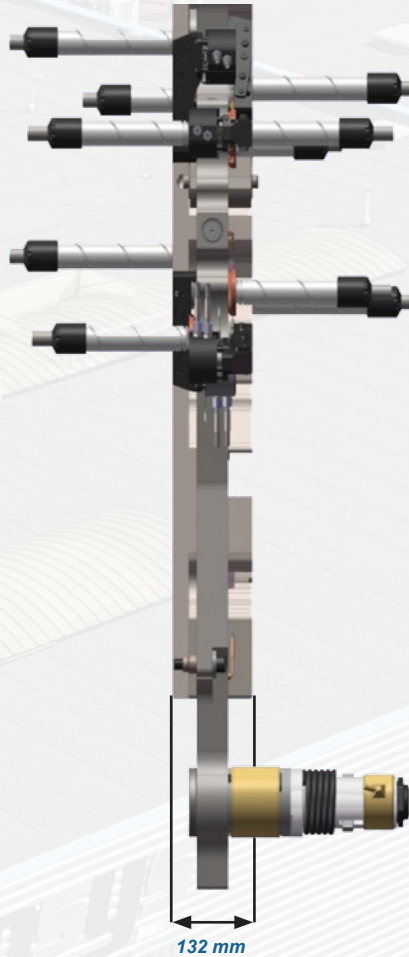
Stack mold solution for sequential hot runner systems
Stepflow is a compact and coolant free self contained middle part of the mold which includes the mechanical, thermal, hydraulic components and an innovated automatic mechanical transfer nozzle



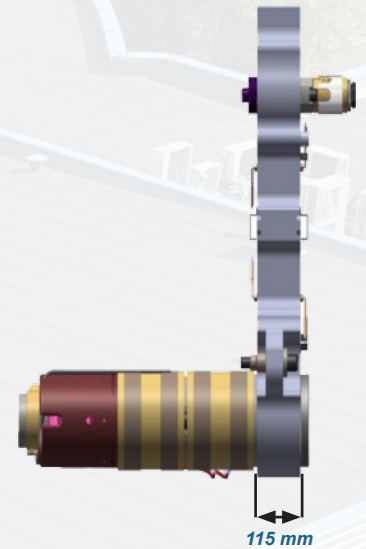
Opposite nozzles
version two manifolds



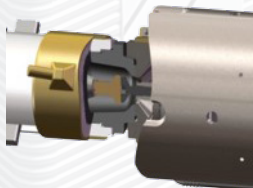
Shifted nozzles
version one manifold



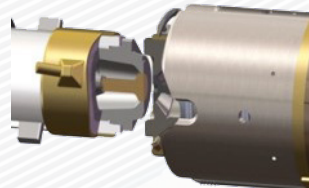
Fix part on the mold



Mold closed position:
open automatically



Mold open position:
closed automatically



Automatic mechanical
transfer nozzle without waste

